



Washington Ethical Society - A Vibrant Humanistic Congregation

## SEEK, December 11, 2016

### 9:30 SEEK:

- Nursery - fun and play with paid staff and volunteers
- PreK/K - Michelle Kaufman and George Taylor - Lesson on Being Yourself is OK with the story: [Calvin Can't Fly: The Story of a Bookworm Birdie](#) by Jennifer Berne.
- K-1st OWL - Mike Kravitz and Sonja Kueppers - Final session - Celebration!
- 1st-3rd - Melissa Sinclair - Second Sundays are for Service - making Holiday cards for residents of a nursing home.
- 4th-5th - Alec Armstrong and Kris Maccubbin - Second Sundays are for Service - making Holiday cards for residents of a nursing home.
- Middle School Neighboring Faiths - Sven Sinclair D'oh God lesson on Christianity
- 9th-12th Grade - 9 am start for Waffle Bar!!!!

### 11:00 SEEK: (This OWL class is 90 minutes long)

- 7th-9th Grade OWL - Guest Panel

### 11:30 SEEK:

- Nursery - fun and play with paid staff and volunteers
- PreK/K - Pam Williams and George Taylor - Lesson on

## Teen Corner

### Up coming Schedule:

12/4 - Waffle Bar! Met at 9 am

**12/11 -RWD: Penal System and incarceration**

12/18 - RWD - Self-driving cars and automation taking over human labor

12/25 - No Teen group

1/1 - There will not be a Waffle Bar this week.

1/8 - Teen Group

1/15 - Teen Group to go to Platform - fellow teen Russell Corbin will be talking about El Rodeo

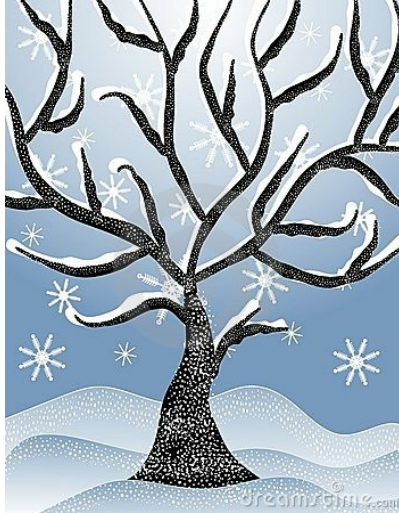
1/22 - RWD - LGBTQ Terms and Identity (Adobe)

1/28 - Ice Skating (Brrr...)

1/29 - RWD - Gun Rights

Being Yourself is OK with the story: [Calvin Can't Fly: The Story of a Bookworm Birdie](#) by Jennifer Berne.

- 1st-3rd -Melissa Sinclair and Nilam Patel - Second Sundays are for Service - making Holiday cards for residents of a nursing home.
- 4th-6th - Carol Mulholland and TBA - Second Sundays are for Service - making Holiday cards for residents of a nursing home.
- 9th-12th Grade - Real World Discussions - Penal System and Incarceration discussion



**Sunday School Spotlight:** Big congrats to all the SEEK students participating in the Winter Festival: Ella Peterson, Fiona Peterson, Jess Minicozzi, Aubrey Kaufman, Declan Nam, Sarah Minicozzi, Caleb Grimes, Marcella Verchinski, Eli Minicozzi, Karl Pfeifer, Inira Nam, Erika Pfeifer, Abby Oswald



## Winter Festival

4:30pm — Winter Festival Performance  
6pm — Cookies and Punch Reception\*  
7pm — Winter Festival Performance

Saturday, December 10  
Washington Ethical Society  
7750 16th St. NW  
Washington, D.C. 20012  
[www.ethicalsociety.org](http://www.ethicalsociety.org)

\*If you are able to help with the reception with home-baked cookies or coordination, please email Amanda ([amandap@ethicalsociety.org](mailto:amandap@ethicalsociety.org))



## Announcements!

### Giving Tree Presents are due to WES!

If you checked out an ornament - gifts need to be in to WES by Sunday, December 11th. (You can also return them at Winter Festival evening, December 10th).



### Holiday Wrapping Party at WES!!!

*Want some company while wrapping gifts for Winter Solstice, Hanukkah, Christmas, Kwanzaa or New Year?*

*Join your WES friends at WES on Tuesday, December 20th, beginning at 7 pm in the Social Hall.*

*Bring your gifts to wrap, wrapping paper and bows. Melissa Sinclair will provide tape and light snacks.*

# HOLIDAY PARTY

For the Baltimore, Northern Virginia, and Washington Ethical Societies at the Sinclair home, 12/18, 4pm.



**The Evite for this event is here -**

**RSVPs on the evite no later than Thursday evening, December 15th so we know how many gingerbread houses and crafts to assemble.**

Besides gingerbread houses and ornament making, there is table tennis, a pool table, and a Wii with several fun/interactive non-violent games. There is also a kid's train set, play kitchen, large rocking horse, and a playhouse in the basement. There is space all over the house for crafts and conversation.



Hosting this event is a great joy for our family, but if you wish to help offset the cost of the gingerbread houses and ornaments, there will be a donation box near the front

door. (Guide for costs: a gingerbread house alone costs about \$12 for the kit, icing, candies and wrapping to take it home.)

Please be aware that we have two cats. We will lock them up for the party, but if you are allergic to cats, make sure you are prepared.

*If you would like to help assemble gingerbread house frames on Thursday and/or Friday December 13th and 14th - reply which date you can help in your evite RSVP.*



**Second Saturdays are for Service outside of WES**

**Volunteering at Wider Circle, January 14th - 10 am to Noon followed by lunch.** RSVPs to **Melissa** are required by Thursday evening, 1/12. They need this information at the Wider Circle Office.

Park at the school next to AWC warehouse. You will also need to fill a waiver when you get there. See the linked website above for more information.



This lends so nicely to our SEEK Students. We can make it Second Saturday for Service outside of WES, and then Second Sundays for Service in SEEK classrooms the following day.

**Important Links**

[WES Home Page](#)

[SEEK Facebook Group](#)

[Calendar](#)

[Photos from December](#)



We're on Meetup.com!

<http://www.meetup.com/WashingtonEthicalSociety/>

